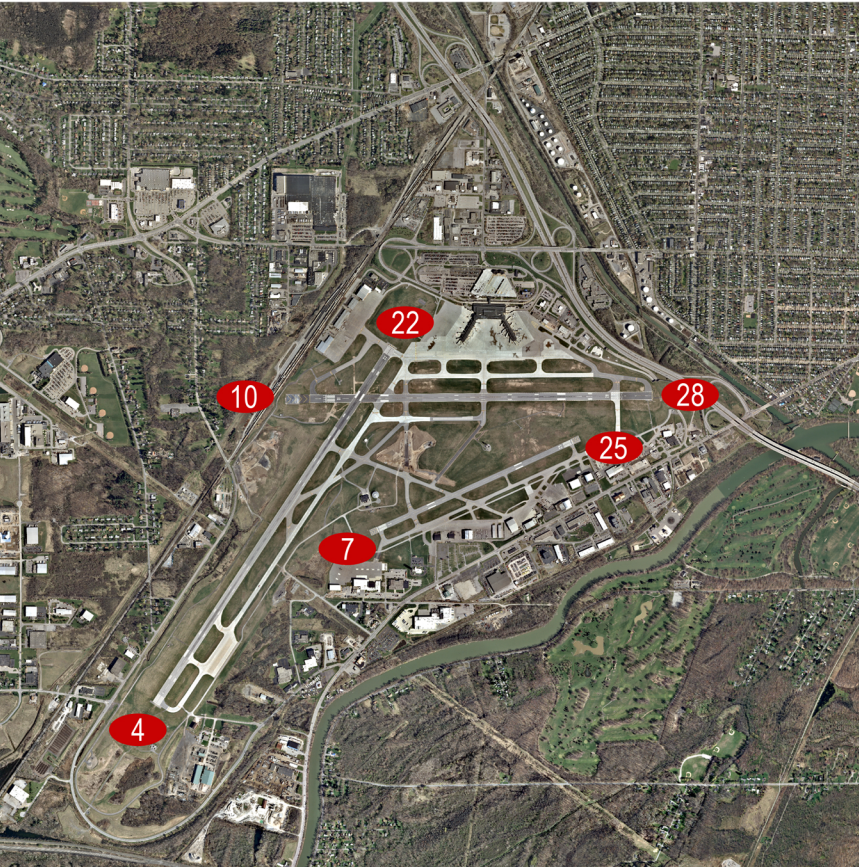


ROCHESTER
GREATER ROCHESTER INT'L AIRPORT

MONROE CO.
ROC

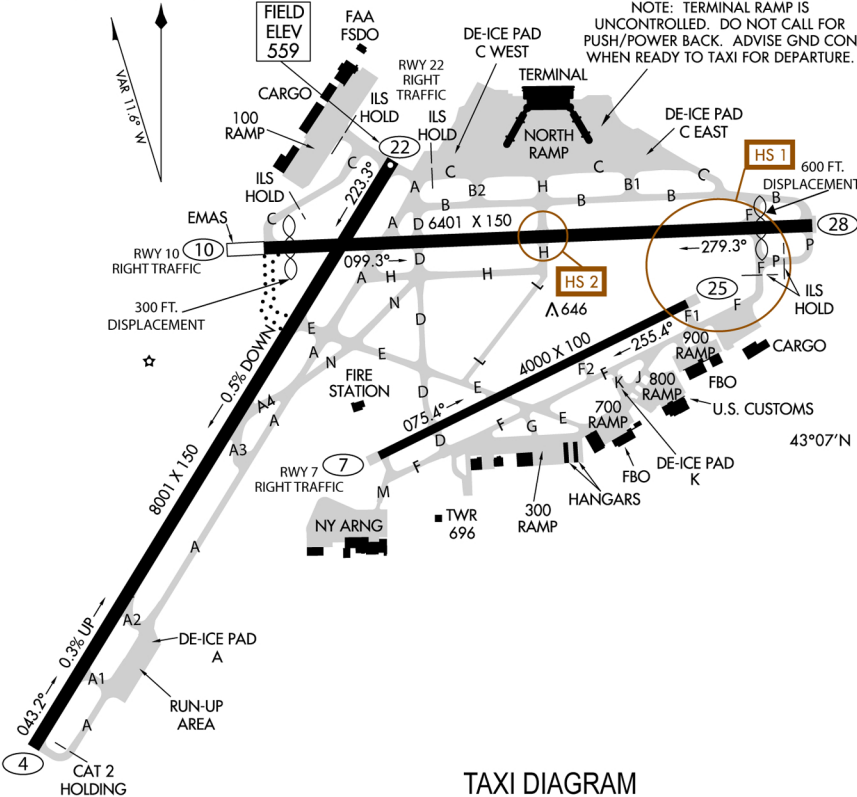


Runways	Coordinates
04/22: 8001 x 150 (ASPH-G)	Latitude 43-07-08.9116N
07/25: 4000 x 100 (ASPH-E)	Longitude 077-40-18.7294W
10/28: 6402 x 150 (ASPH-G)	
RIGHT TRAFFIC RUNWAYS 22, 07 & 10	

Communications	Navigation
ASOS 124.825 (585) 235-7322	Elevation 559
ATIS 124.825	NM from City 03 SW
UNICOM 122.95	Instr Approach PRECISION
CLNC 118.8	
GROUND 121.7	
TOWER 118.3	
APP 119.55 (330°-160°) 123.7 (161°-329°) (ROCHESTER)	
DEP 119.55 (330°-160°) 123.7 (161°-329°) 127.325 (ROCHESTER)	
185 (REVISED 3/2015)	

ROCHESTER
GREATER ROCHESTER INT'L AIRPORT

MONROE CO.
ROC



TAXI DIAGRAM

Owner/Manager	Services
Owner: Monroe County	Fuel JETA 100LL
Manager: Mr. Michael A Giardino	Airframe Repairs MAJOR
1200 Brooks Avenue	Engine MAJOR
Rochester, NY 14624	Attended ALL/ALL/ALL
	Airline Airport YES
Phone: (585) 753-7056	Transportation TAXI, RENTAL, BUS
Fax: (585) 753-7008	Food ON FIELD
E-mail: mcairport@monroecounty.gov	Lodging ON FIELD
Web site: www.monroecounty.gov/airport-index.php	

FBO	Remarks
USAirports Flight Support (585) 527-6835	BIRDS; DEER & COYOTE ON & INVOLV ARPT. NO PRACTICE APCHS OR MAINT ENG RUN- UPS BTN 2300-0600. BE ALERT DURG LNDG/ TKOF RWYS 25 & 28 - THLDS IN CLOSE PROXIMITY TO EACH OTHER. MULTIPLE UNSHIELDED LGTS IN FINAL APCH AREA RWY 28. FOR ADD'L ARPT INFO GO TO: http://www.gcr1.com/5010web/