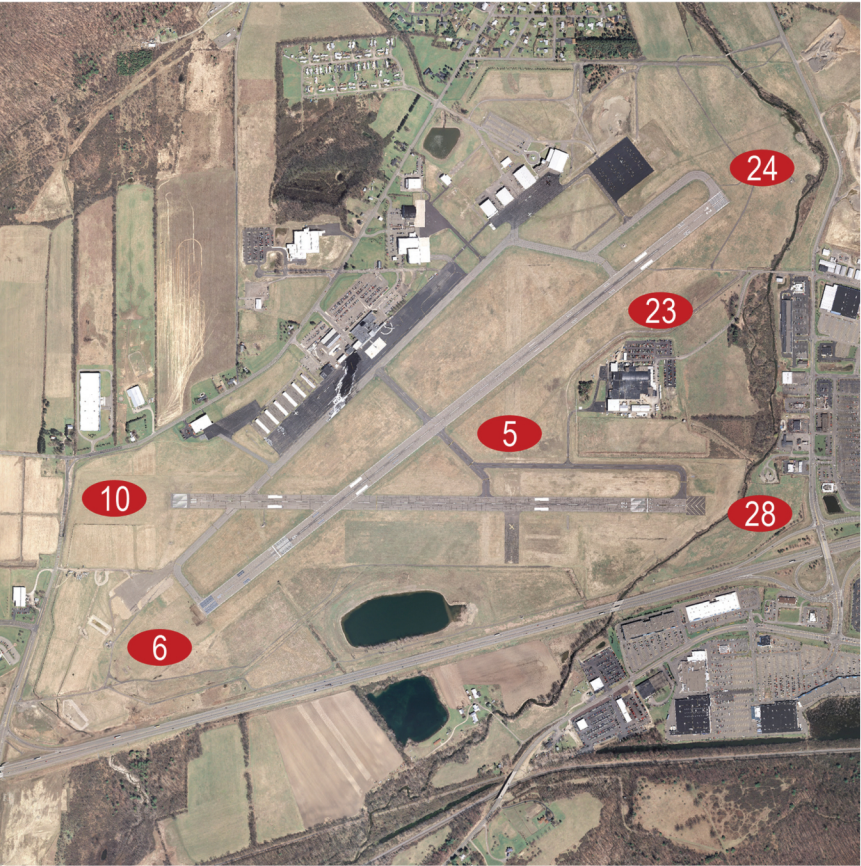


ELMIRA
ELMIRA CORNING REGIONAL AIRPORT

CHEMUNG CO.
ELM

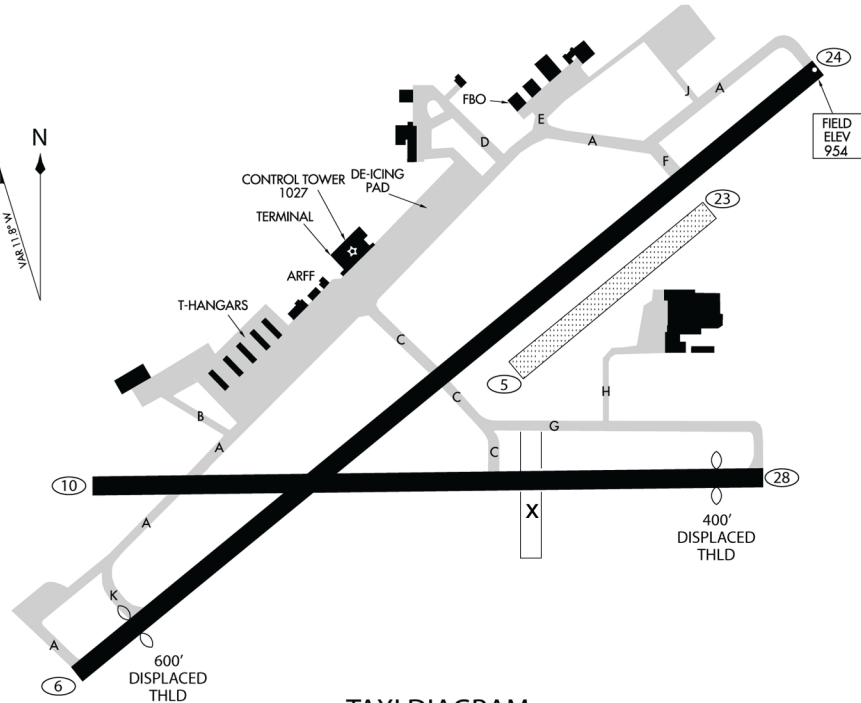


Runways	Coordinates
10/28: 5404 x 150 (ASPH-G)	Latitude 42-09-35.6000N
06/24: 7599 x 150 (ASPH-G)	Longitude 076-53-29.8000W
05/23: 2017 X 150 (TURF-G)	

Communications	Navigation
ASOS (607) 796-0065	Elevation 954
ATIS 125.475	NM from City 6 NW
UNICOM 122.95	Instr Approach PRECISION
CTAF 121.1	
CLNC 121.9	
GROUND 121.9	
TOWER 121.1 (1100-0500Z)	
APP/DEP 118.15, 119.45 (ELMIRA, 1100-0500Z)	
APP/DEP 133.35 (NEW YORK, 0500-1100Z)	

ELMIRA
ELMIRA CORNING REGIONAL AIRPORT

CHEMUNG CO.
ELM



TAXI DIAGRAM

Owner/Manager	Services
Owner Chemung County	Fuel JETA 100LL A
Manager Ms. Ann B. Crook, AAE 276 Sing Sing Rd., Suite 1 Horseheads NY 14845	Airframe Repairs MAJOR
	Engine MAJOR
	Attended
	Airline Airport YES
	Transportation
	Food
	Lodging
Phone (607) 739-5621 or 739-5622	
Fax (607) 739-8539	
E-mail: ecra@co.chemung.ny.us	
Web Site: www.ecairport.com	

FBO	Remarks
Atlantic Aviation (607) 739-3597 Freq. 122.95	BIRDS & DEER ON & INVOF ARPT. WHEN ATCT CLSD ACTVT HIRL RY 06/24, MALSR RYS 06 & 24, TWY LGTS TWYS A & C NORTH OF RY 06/24 - CTAF; FOR MIRL RY 10/ 28 & ALL OTHER TWY LGTS CALL 607-426-5621 ACFT WITH WINGSPANS GREATER THAN 93 FEET SHOULD USE EXTREME CARE WHEN TAXIING ON TWY A ADJ TO RAMPS. EXTSV GLIDER ACTIVITY ON & INVOF ARPT. WHEN ELM ATCT CLSD, CLNC DELIVERY/CANCELLATIONS AVBL THRU RCO 122.2/122.4 OR CALL BUF AFSS 1-800-WX-BRIEF. LNDG FEE FOR ALL NON BASED ACFT. WINTER DE-ICING ON GLYCOL RAMP ONLY. FOR ADD'L ARPT INFO GO TO: http://www.gcr1.com/5010web/
First Flight 800-221-1802 (607) 739-7148	
FirstAir (607) 739-3597	
Skyline Air (607) 739-1341	