

FIGURE 1: TYPICAL LANE CONFIGURATION OF THE EXISTING ROCKLAND APPROACH.

Lane 1 & 7 Units (Shop Drawings Panels A & D Series)

Size: Approximately 12'-7" W x 50' L

Weight: Approximately 75500lbs, not including the steel barrier.

Configuration: Two galvanized rolled beams approximately 50' in length with an 8 1/4" monolithic HP concrete deck. The fascia beam is a W27x102, interior beam is a W27x94

In-Service Years: 7-9 years.

NOTE: The expansion end consists of the steel beam welded to an elastomeric bearing. The fixed end consists of a concrete footer that sits on a neoprene pad. The existing anchor bolts were used/extended and grouted.

Lane 4 Units (Shop Drawings Panels F Series)

Size: 13'-3" W x 50' L

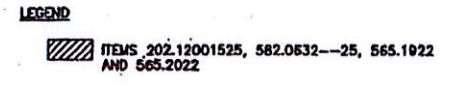
Weight: Approximately Weight 86500lbs.

Configuration: consists of 3 galvanized rolled beams approximately 50 feet in length with an 8 1/4 inch monolithic HP concrete deck. The beams are W27x114.

Surface: Longitudinal grooving.

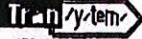


In-Service: 4-6 years.

NOTE: The expansion end consists of the steel beam welded to an elastomeric bearing. The fixed end consists of a concrete footer that sits on a neoprene pad. The existing anchor bolts were used/ extended and grouted.

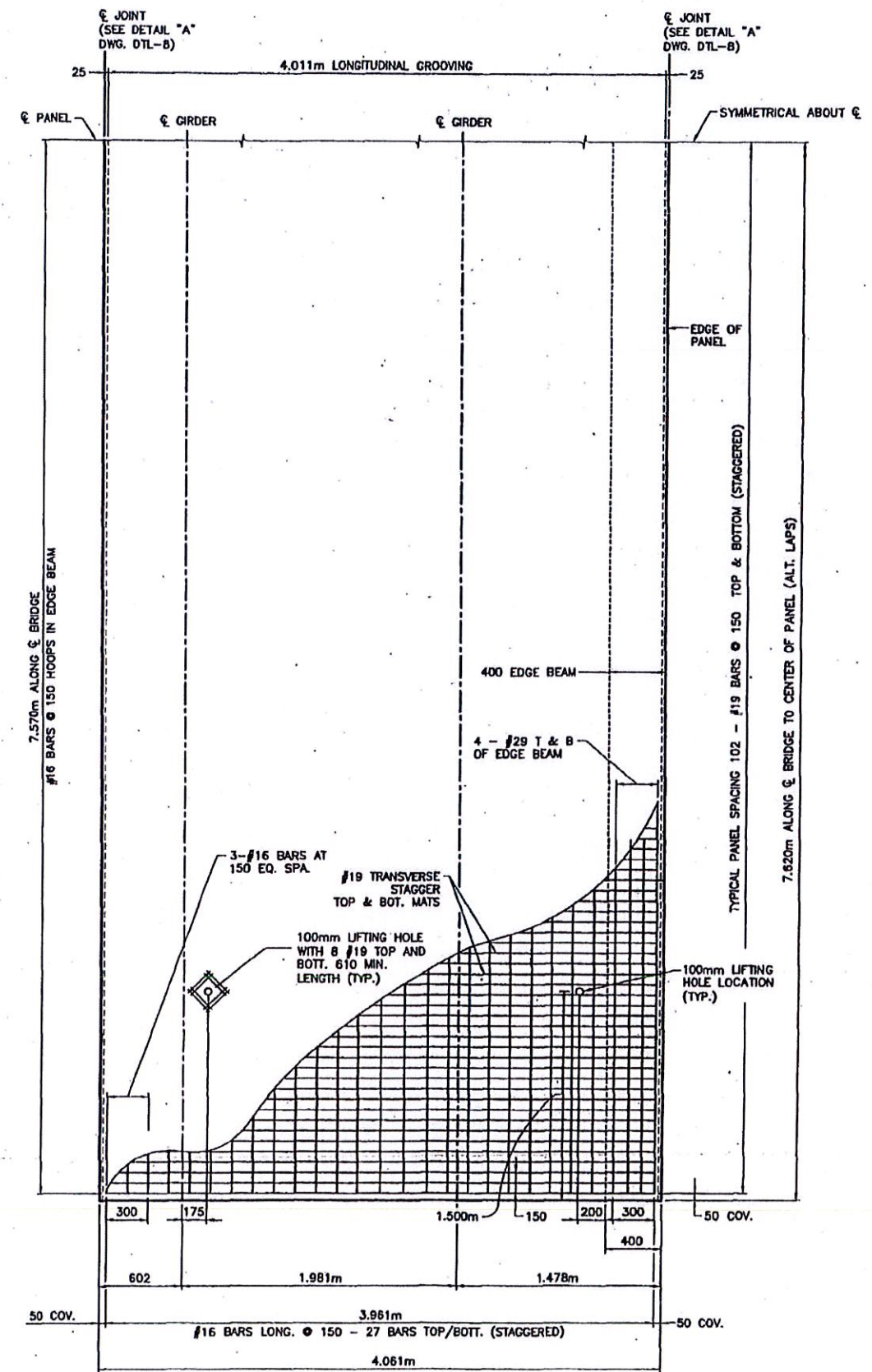


EXISTING
PIERS 81 - 166
SCALE: 1 : 50



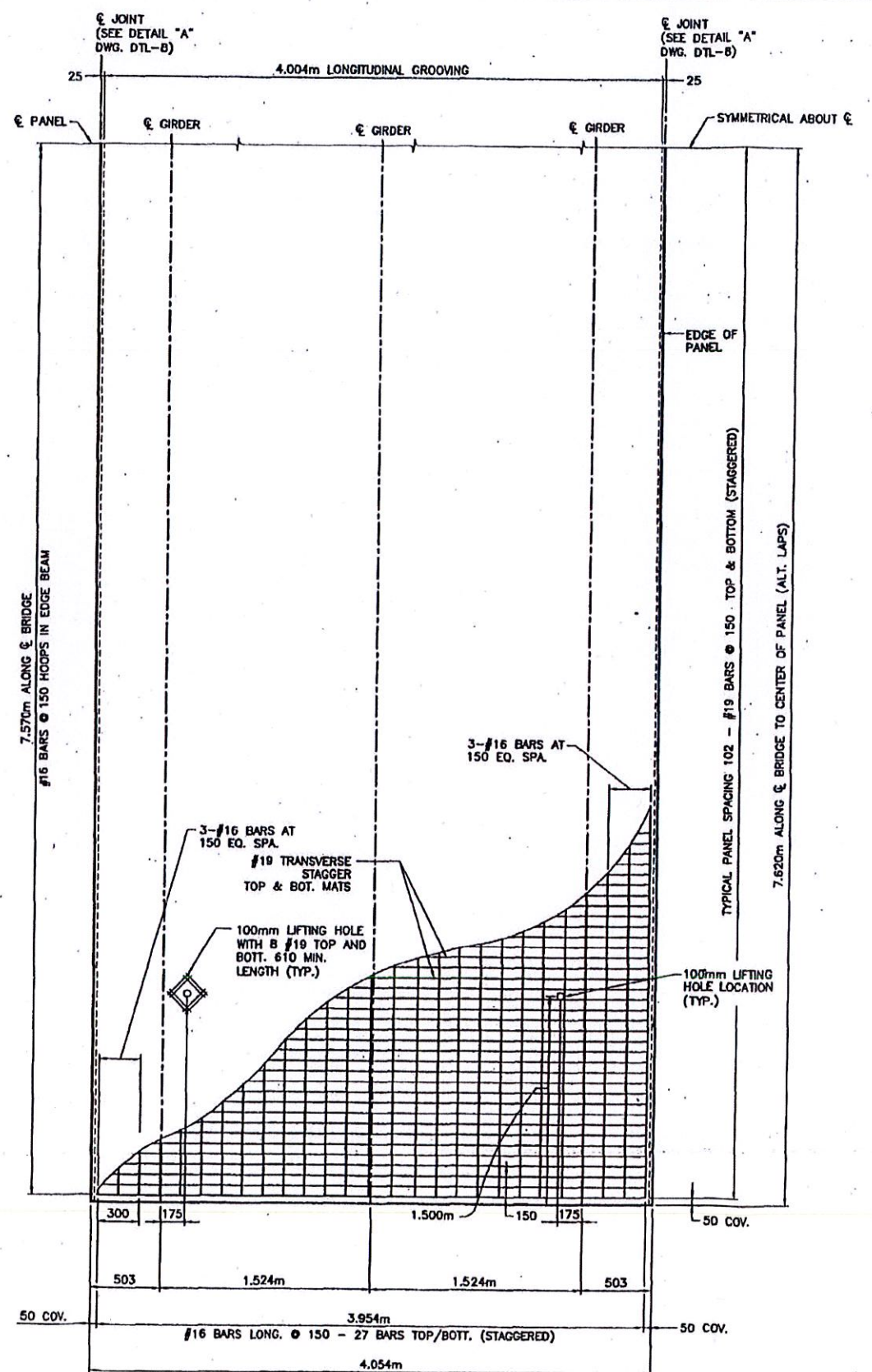
BIN 5516340			
DATE	DESCRIPTION	BY	SYM.
<p align="center">ATTENTION</p> <p>NOTICE: THIS DOCUMENT CONTAINS SENSITIVE AND/OR CONFIDENTIAL INFORMATION THAT MAY ONLY BE USED FOR THE SOLE PURPOSE OF PREPARING A BID FOR THIS PROJECT. ANY OTHER USE IS STRICTLY PROHIBITED. IF YOU HAVE RECEIVED THIS DOCUMENT IN ERROR OR ARE NOT THE INTENDED RECIPIENT, BE ADVISED THAT ANY USE, DISSEMINATION OR COPYING OF THIS DOCUMENT IS STRICTLY PROHIBITED AND YOU MUST DESTROY IT IMMEDIATELY.</p>			
<p align="center">  ARCHITECT & ENGINEER, P.C. 3000 Park Gateway, Suite 100, Jersey City, New Jersey 07310 Tel: 201-992-1000, Ext. 1000 </p> <p align="center">  HATCH, DILLIARD, ANDERSON & ASSOCIATES ARCHITECTS, ENGINEERS & SCIENTISTS </p>			
<p align="center"> NEW YORK STATE THRUWAY AUTHORITY DEPARTMENT OF ENGINEERING SERVICES 200 SOUTHERN BLVD., ALBANY, N.Y. 12208 </p>			
<p> TITLE OF PROJECT TAPPAN ZEE BRIDGE REPAIR PROJECT </p>			
<p> LOCATION OF PROJECT TAPPAN ZEE BRIDGE MP 14.67± </p>			
<p> TITLE OF DRAWING CAUSEWAY TYPICAL SECTION PIERS 81- 166 </p>			
		<p> CONTRACT NUMBER: TANY 10-9B </p> <p> DATE: 12/22/09 </p> <p> DRAWING NUMBER: TSU-1 </p>	

IN CHARGE OF: G. BROSIUS
 DESIGNED BY: M. LANT
 CHECKED BY: A. GANESH / G. BROSIUS
 DRAFTED BY: W. NG



DECK REINFORCEMENT PANEL PLAN - LANE 3
(LANE 5, PANEL OPPOSITE HAND)

SCALE: 1 : 20



DECK REINFORCEMENT PANEL PLAN - LANE 4

SCALE: 1 : 20

NOTES:

1. ALL DIMENSIONS MEASURED ARE HORIZONTAL. ACTUAL DIMENSIONS SHALL BE PROVIDED BY THE CONTRACTOR AFTER SURVEY AND DETERMINING CROSS SLOPE AND LONGITUDINAL SLOPE.
2. SEE PRECAST SUPERSTRUCTURE NOTES (G-3) FOR TOP SURFACE REQUIREMENTS.
3. SEE G-4 FOR GROUTING REQUIREMENTS.
4. FOR EDGE BEAM REINFORCEMENT SEE DWG. DPU-3.
5. FOR END BEAM REINFORCEMENT, SEE DWG. DTL-2.

NOTE:

ALL DIMENSIONS ARE SHOWN IN MILLIMETERS UNLESS OTHERWISE NOTED.

BIN 5516340			
DATE	DESCRIPTION	BY	SYN.
REVISIONS			
NOTICE: THIS DOCUMENT CONTAINS SENSITIVE AND/OR CONFIDENTIAL INFORMATION THAT MAY ONLY BE USED FOR THE SOLE PURPOSE OF PREPARING A BID FOR THIS PROJECT. ANY OTHER USE IS STRICTLY PROHIBITED. IF YOU HAVE RECEIVED THIS DOCUMENT IN ERROR OR ARE NOT THE INTENDED RECIPIENT, BE ADVISED THAT ANY USE, DISSEMINATION OR COPYING OF THIS DOCUMENT IS STRICTLY PROHIBITED AND YOU MUST DESTROY IT IMMEDIATELY.			
 ARCHITECT & ENGINEER, P.C. 200 SOUTH BAY BLVD., SUITE 200 ALBANY, N.Y. 12209			
 NEW YORK STATE THRUWAY AUTHORITY DEPARTMENT OF ENGINEERING SERVICES 200 SOUTH BAY BLVD., ALBANY, N.Y. 12209			
TITLE OF PROJECT TAPPAN ZEE BRIDGE REPAIR PROJECT			
LOCATION OF PROJECT TAPPAN ZEE BRIDGE MP 14.67±			
TITLE OF DRAWING SPANS 82-165 PREFABRICATED DECK PANEL DETAILS			
		CONTRACT NUMBER TANY 10-9B DATE 12/22/09 DRAWING NUMBER DPU-1	

CHECKED BY: M. COX

DRAWN BY: CAD

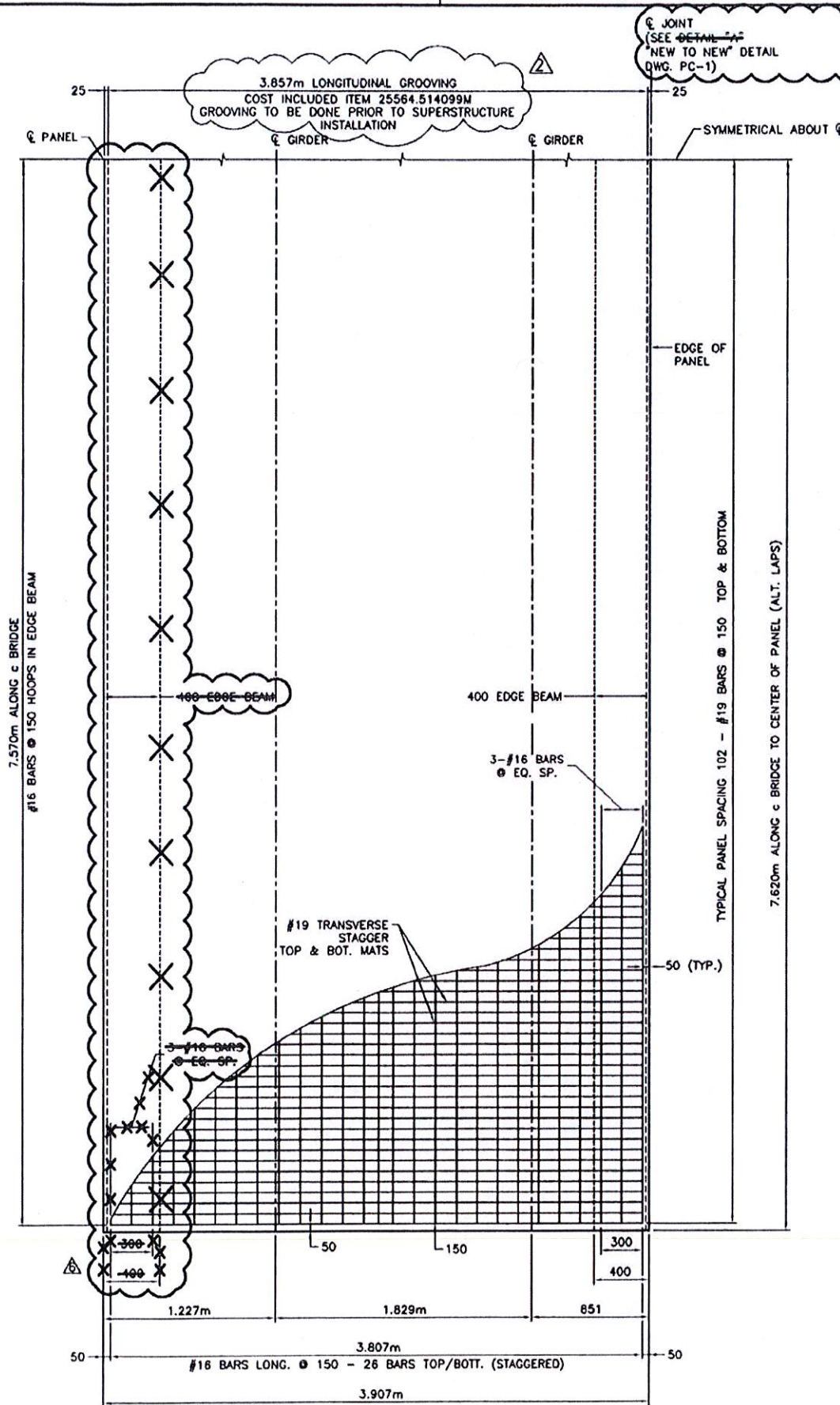
DESIGNED BY: M. COX

IN CHARGE OF: J. WAGNER

FIELD REVISION SHEET

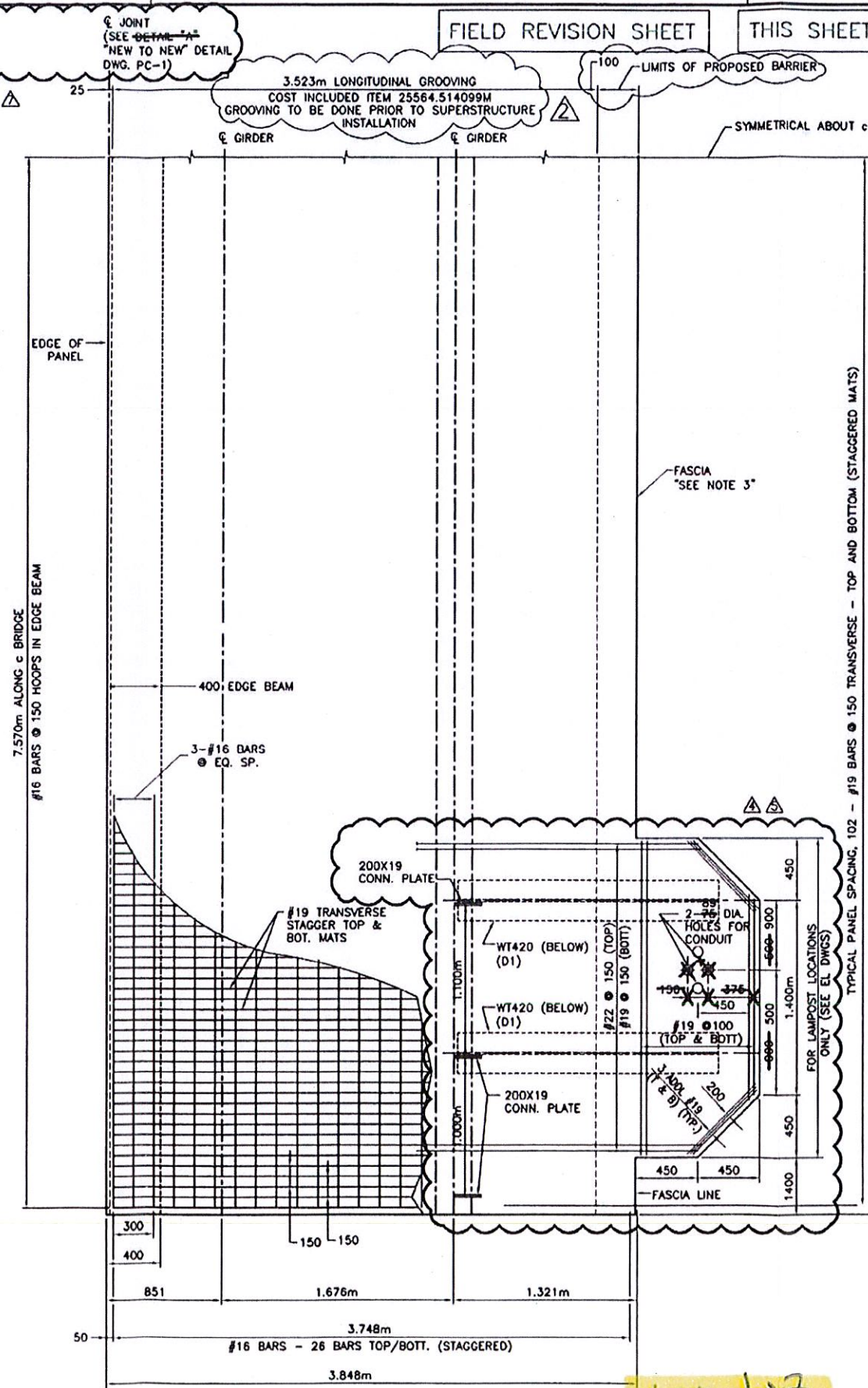
THIS SHEET SUPERSEDES SHEET 37A4

37A4R1
301



DECK REINFORCEMENT INTERIOR PANEL PLAN

SCALE: 1 : 20



DECK REINFORCEMENT EXTERIOR PANEL PLAN

SCALE: 1 : 20

NOTES:

1. COST FOR PREFABRICATED SUPERSTRUCTURE CONCRETE, REINFORCEMENT, STEEL STRINGERS, SHEAR STUDS, AND STEEL DIAPHRAGM(S) AND CONNECTION PLATES SHALL BE INCLUDED IN ITEM 25564.514099M.
2. ALL DIMENSIONS MEASURED ARE HORIZONTAL. ACTUAL DIMENSIONS SHALL BE PROVIDED BY THE CONTRACTOR AFTER SURVEY AND DETERMINING CROSS SLOPE AND LONGITUDINAL SLOPE.
3. FASCIA SHALL BE CAST TO MATCH EXISTING HORIZONTAL CURVATURE. SEE DWG. SC-1, SC-2, DS-2, DS-3 FOR EXISTING AND PROPOSED FASCIA OVERHANG LENGTHS.
4. MINIMUM AGE OF PREFABRICATED SUPERSTRUCTURE AT THE TIME OF TRANSPORTATION 28 DAYS.
5. MINIMUM AGE FOR PREFABRICATED PANELS AT THE TIME OF ERECTION SHALL BE 45 DAYS.
6. THE CONCRETE FOR THE PREFABRICATED PANEL SHALL HAVE A MINIMUM STRENGTH OF 35 MPa AFTER 28 DAYS.
7. PROPOSED DECK EXTENSION TO ACCOMMODATE BRIDGE LIGHTING IS TO BE INCLUDED IN BID ITEM 25564.514099M.

NOTICE:

THIS DOCUMENT CONTAINS SENSITIVE AND/OR CONFIDENTIAL INFORMATION THAT MAY ONLY BE USED FOR THE SOLE PURPOSE OF PREPARING A BID FOR THIS PROJECT. ANY OTHER USE IS STRICTLY PROHIBITED. IF YOU HAVE RECEIVED THIS DOCUMENT IN ERROR OR ARE NOT THE INTENDED RECIPIENT, BE ADVISED THAT ANY USE, DISSEMINATION OR COPYING OF THIS DOCUMENT IS STRICTLY PROHIBITED AND YOU MUST DESTROY IT IMMEDIATELY.

BIN 5516340			
6/13	CONCRETE EDGE BEAM	WAI	△
6/13	CONCRETE EDGE BEAM	WAI	△
6/13	LAMP POLE BUMPOUT	WAI	△
11/05	LIGHT POLE SUPPORT DETAILS	LJK	△
11/05	DECK REIN.	M. COX	△
DATE	DESCRIPTION	BY	SYM

REVISIONS

NEW YORK STATE THRUWAY AUTHORITY
DEPARTMENT OF ENGINEERING SERVICES
200 SOUTHERN BLVD., ALBANY, N.Y. 12209

TITLE OF PROJECT
TAPPAN ZEE BRIDGE
REPAIR PROJECT

LOCATION OF PROJECT
TAPPAN ZEE BRIDGE
W.P. 14.67

TITLE OF DRAWING
PROPOSED
DECK REINFORCEMENT
SPAN 2 - 166

CONTRACT NUMBER:
TANY 05-31B

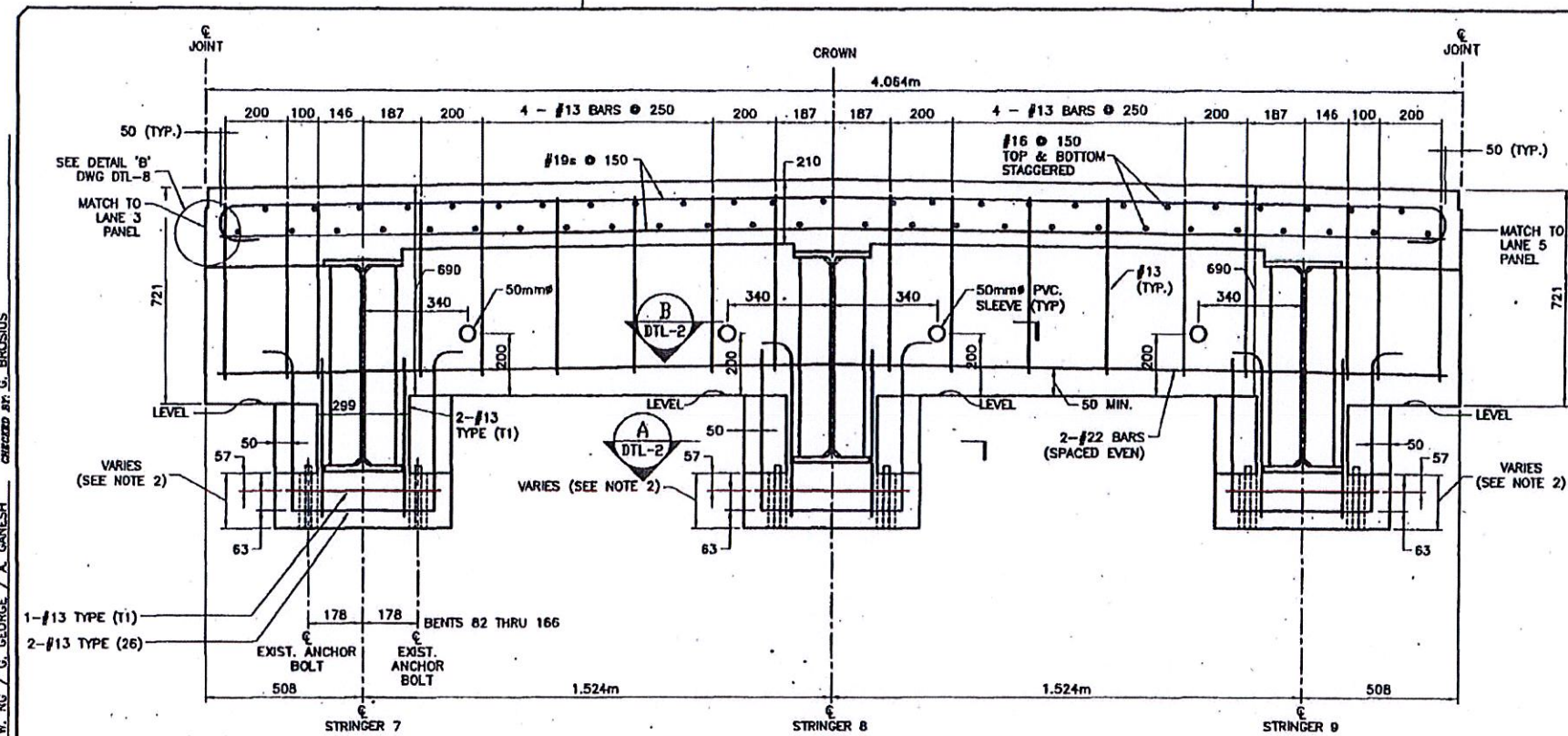
DATE:
10/05

DRAWING NUMBER:
DS-4R1

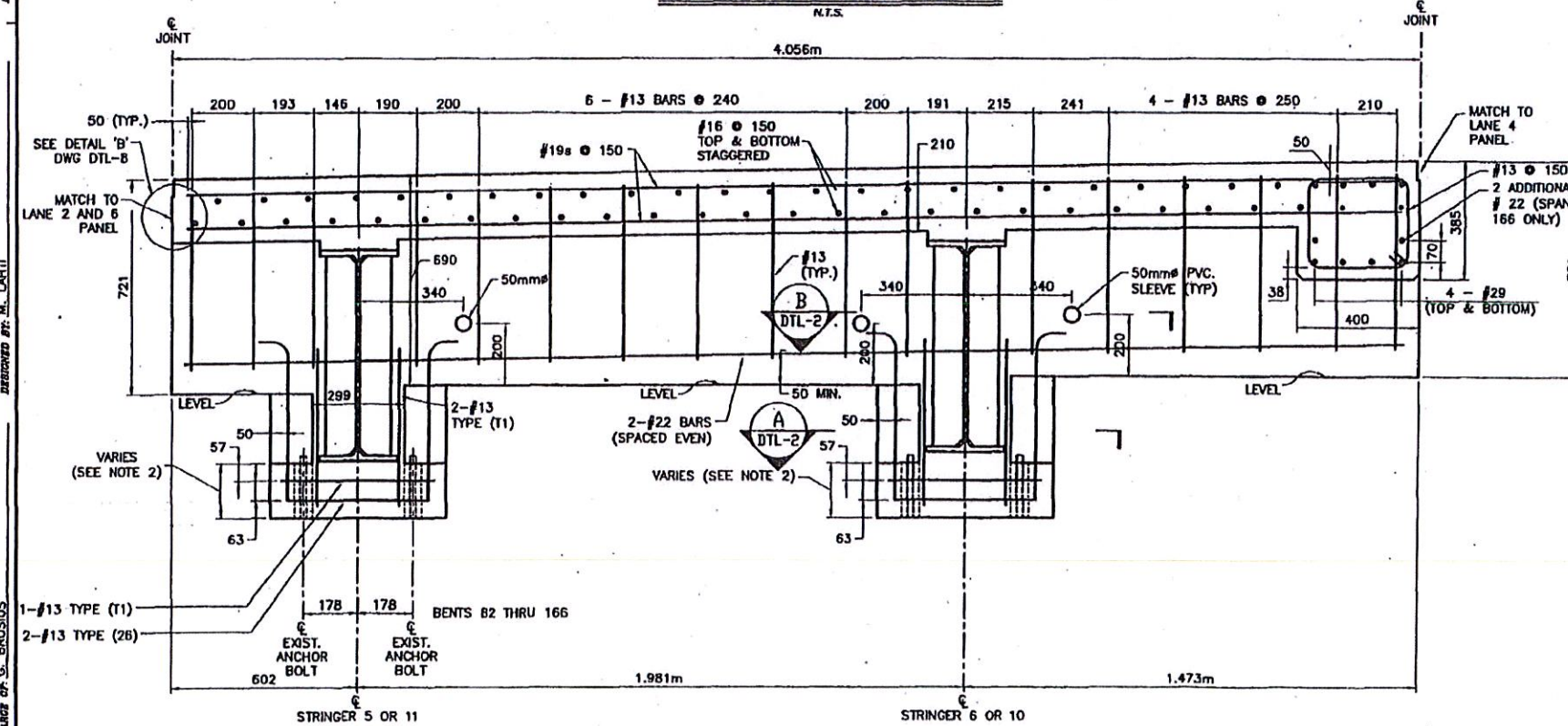


NOTE:
ALL DIMENSIONS ARE SHOWN IN MILLIMETERS
UNLESS OTHERWISE NOTED. ALL ELEVATIONS
ARE SHOWN IN METERS.

Lane 1 & 2

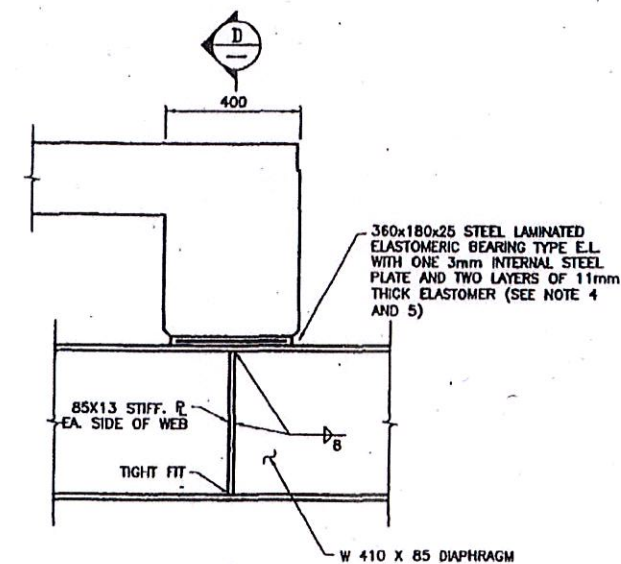


PRECAST PANEL ELEVATION
LANE 4 AT FIXED END

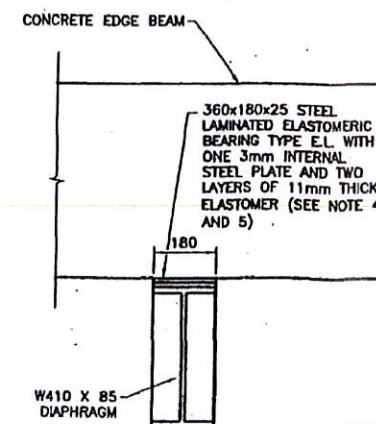


PRECAST PANEL ELEVATION - LANE 3
(LANE 5 PANEL OPPOSITE HAND)

- NOTES:**
1. SEE DWGS. DPU-1, DTL-2 AND DTL-3 FOR ADDITIONAL DETAILS.
 2. THE CONTRACTOR SHALL REDUCE DEPTH OF THE CONCRETE BELOW FLANGE TO MAKE ELEVATION ADJUSTMENT.
 3. AFTER INSTALLATION OF CONCRETE SUPERSTRUCTURE, THE CONTRACTOR SHALL GROUT ANCHOR BOLTS. SEE G-4 FOR GROUT GENERAL NOTES.
 4. BEARINGS ON TOP OF DIAPHRAGMS ARE SIMILAR TO BEARINGS AT GIRDERS. SIKADUR 31 EPOXY SHALL BE USED TO ATTACH ELASTOMERIC PAD TO THE STEEL DIAPHRAGM.
 5. STEEL LAMINATED BEARINGS ON TOP OF DIAPHRAGMS TO BE PAID UNDER 565.1921.

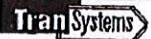




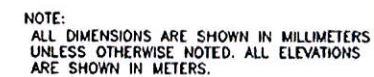
EDGE BEAM BEARING DETAIL
N.T.S.




D SECTION
— N.T.S

NOTE:
ALL DIMENSIONS ARE SHOWN IN MILLIMETERS
UNLESS OTHERWISE NOTED.

BIN 5516340			
DATE	DESCRIPTION	BY	SY
REVISIONS			
<p>NOTICE: THIS DOCUMENT CONTAINS SENSITIVE AND/OR CONFIDENTIAL INFORMATION THAT MAY ONLY BE USED FOR THE SOLE PURPOSE OF PREPARING A BID FOR THIS PROJECT. ANY OTHER USE IS STRICTLY PROHIBITED. IF YOU HAVE RECEIVED THIS DOCUMENT IN ERROR OR ARE NOT THE INTENDED RECIPIENT, BE ADVISED THAT ANY USE, DISSEMINATION OR COPYING OF THIS DOCUMENT IS STRICTLY PROHIBITED AND YOU MUST DESTROY IT IMMEDIATELY.</p>			
<p align="center">  TranSystems ARCHITECT & ENGINEER, P.C. 3601 15th Avenue Suite 1000 New York, NY 10018 </p> <p align="center">  HDR HANSEN DUNN & RICHARDS ARCHITECTS AND ENGINEERS PC </p>			
<p align="center"> NEW YORK STATE THRUWAY AUTHORITY DEPARTMENT OF ENGINEERING SERVICES 200 SOUTHERN BLVD., ALBANY, N.Y. 12209 </p>			
<p>TITLE OF PROJECT TAPPAN ZEE BRIDGE REPAIR PROJECT </p>			
<p>LOCATION OF PROJECT TAPPAN ZEE BRIDGE MP 14.67± </p>			
<p>TITLE OF DRAWING SPANS 82-165 SUPERSTRUCTURE DETAILS FIXED END </p>			
		<p>CONTRACT NUMBER: TANY 10-9B</p> <p>DATE: 12/22/09</p> <p>DRAWING NUMBER: DPU--3</p>	



BIN 5516340			
6/13	LARGE BEAM DEPTH REVISED R/F 74	WA1	△
6/13	BEARING PAD LENGTH REVISED R/F 32	WA1	△
11/10	DETAIL REVISION	LJK	△
DATE	DESCRIPTION	BY	SYM
REVISIONS			
NEW YORK STATE THRUWAY AUTHORITY DEPARTMENT OF ENGINEERING SERVICES 200 SOUTHERN BLVD., ALBANY, N.Y. 12209			
TITLE OF PROJECT TAPPAN ZEE BRIDGE REPAIR PROJECT			
LOCATION OF PROJECT TAPPAN ZEE BRIDGE M.P. 14.67			
TITLE OF DRAWING SPANS 2-166 SUPERSTRUCTURE DETAILS FIXED END			
		CONTRACT NUMBER TANY 05-31B DATE: 9/05 DRAWING NUMBER PC-2R1	